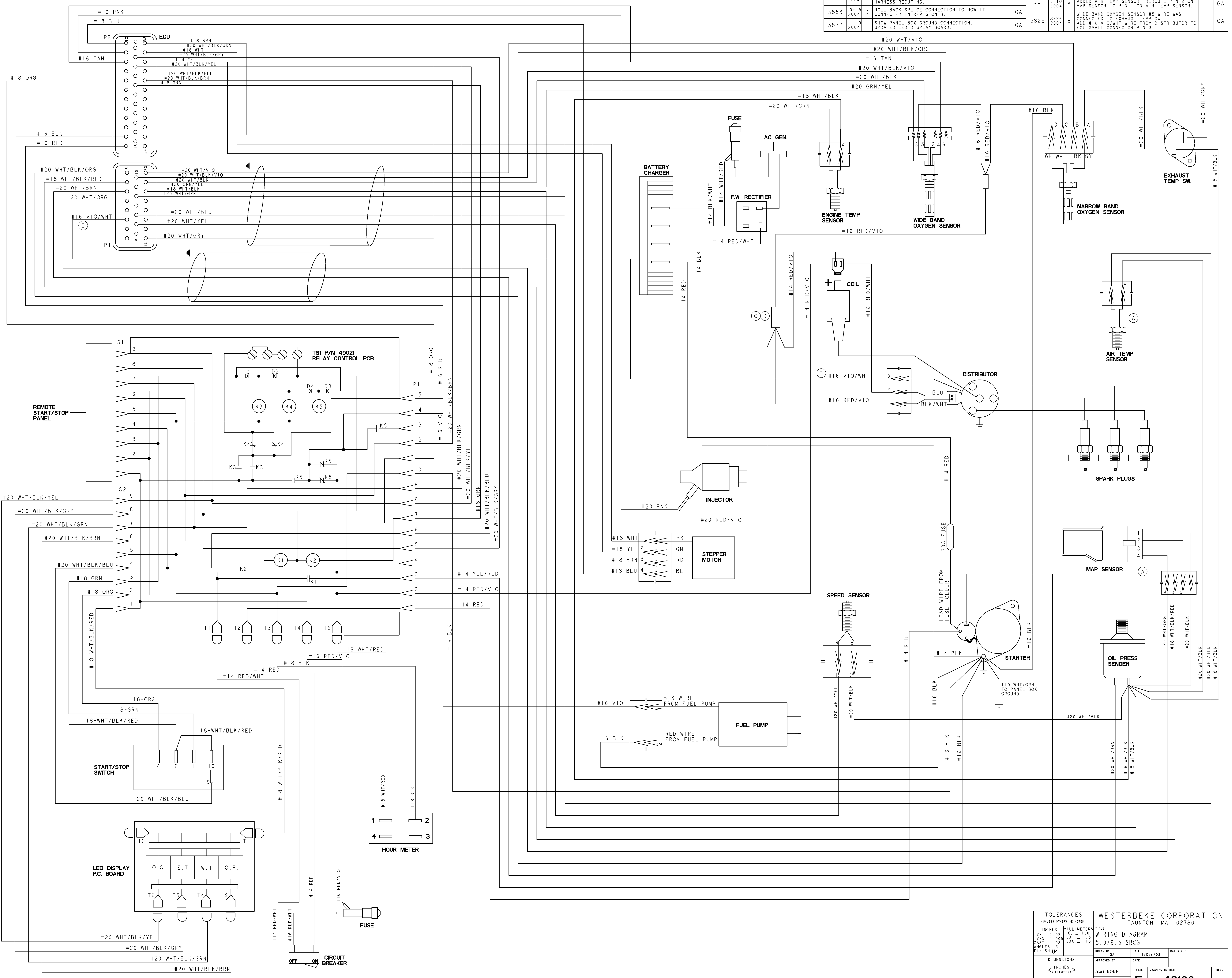


5741	10-5 2004	C	REDRAW SPLICE CONNECTION FOR INJECTOR, COIL, AND OXYGEN SENSOR TO REPRESENT HARNESS REROUTING.	GA		
5853	10-15 2004	D	ROLL BACK SPLICE CONNECTION TO HOW IT CONNECTED IN REVISION B.	GA		
5877	11-19 2004	E	SHOW PANEL BOX GROUND CONNECTION. UPDATED LED DISPLAY BOARD.	GA		

REVISION RECORD						
ECO NO.	DATE	REV.	DESCRIPTION	GA	DR. BY	
5823	6-18 2004	A	ADDED AIR TEMP SENSOR; REROUTE PIN 2 ON MAP SENSOR TO PIN 1 ON AIR TEMP SENSOR.	GA		
	8-26 2004	B	WIDE BAND OXYGEN SENSOR #5 WIRE WAS CONNECTED TO EXHAUST TEMP SW. ADD #16 VIO/WHT WIRE FROM DISTRIBUTOR TO ECU SMALL CONNECTOR PIN 3.	GA		



TOLERANCES (UNLESS OTHERWISE NOTED)		WESTERBEKE CORPORATION TAUNTON, MA. 02780	
INCHES	MILLIMETERS	TITLE	
.XX ± .00	X ± .1	WIRING DIAGRAM	
CX ± .005	X ± .13	5.0/6.5 SBCG	
ANGLE: .03			
FINISH: 2			
DIMENSIONS	APPROVED BY	DATE	MATERIAL:
INCHES	GA	11/Dec/03	
(WHEN APPLICABLE)	SCALE NONE	SIZE	DRAWING NUMBER
	SHT. 1 OF 1	E	49166